

Maestro / Maestro PLUS®
Parts Catalog



Maestro / Maestro PLUS®

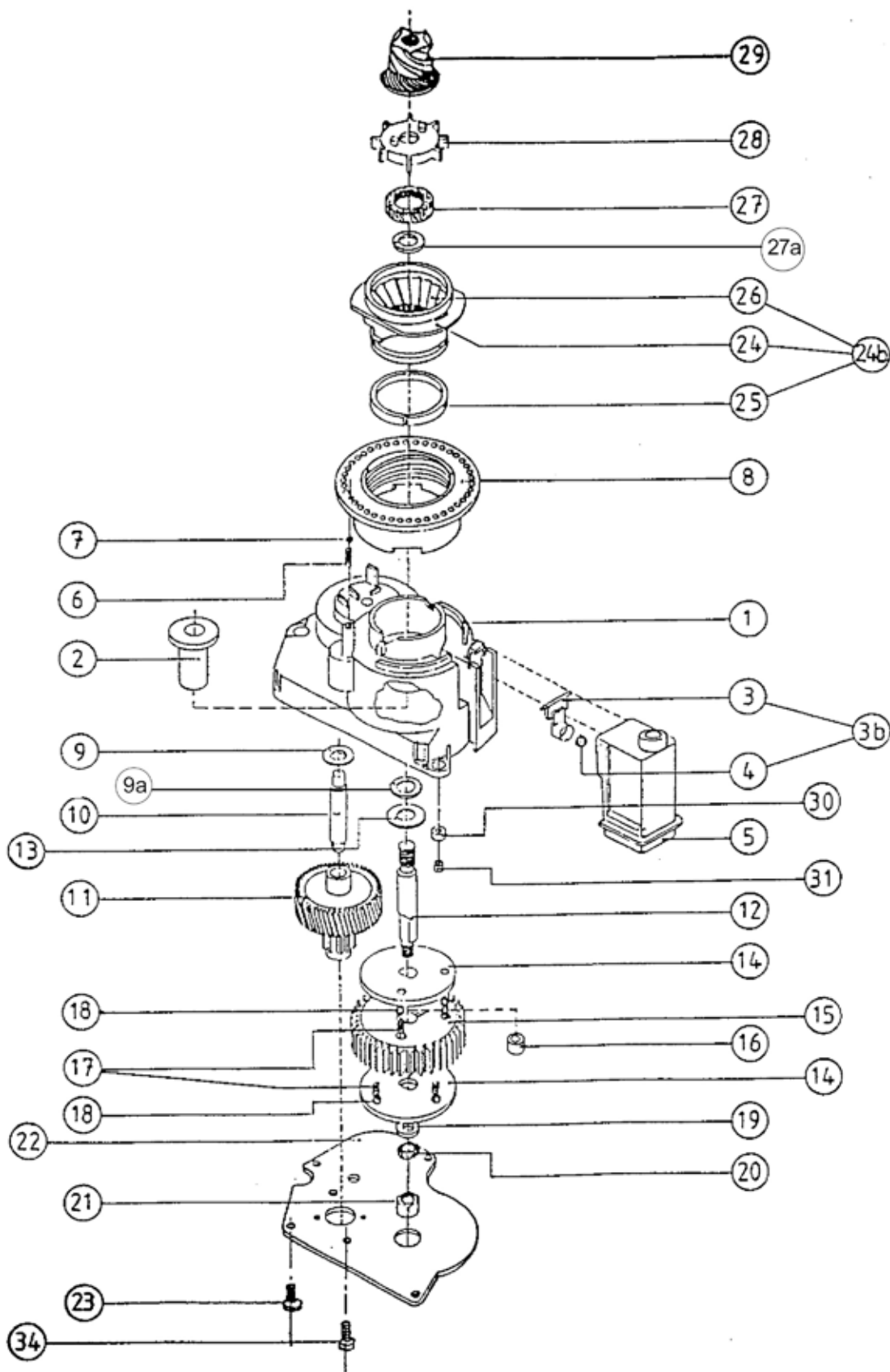
Part Descriptions



Pos.	Part #	Description
1	28100.	Housing grinder
2	2810.01	Bearing slide
3	2810.02	Flap
4	2810.03	Steel ball
5	2810.04	Cover
6	2810.05	Spring
7	2810.06	Steel ball
8	2810.07	Thread ring
9	2810.08	Washer
9a		Shim
10	2810.09	Shaft
11	2810.10	Front wheel
12	2810.11	Shaft
13	2810.12	Washer
14	2810.13	Disk
15	2810.14	Gear wheel
16	2810.15	Ring
17	2810.16	Spring
18	2810.17	Steel ball
19	2810.18	Washer
20	2810.19	Washer
21	2810.20	Nut
22	2810.21	Plate
23	2810.22	PT screw
24	2810.23	Ring Burr retainer
24b	2810.24	Ring Burr assembly-complete with burr and retainer
25	2810.25	split white ring
26	2810.26	Ring Burr
27	2810.27	Felt Washer
27a		Shim
28	2810.28	Paddle wheel
29	2810.29	Center Burr
30	2810.30	Vibration absorbing part
31	2810.31	Rivet
34	2810.34	Screw

Maestro / Maestro PLUS®

Parts Schematic



Maestro / Maestro PLUS®

Part Descriptions



Position	Part #	Description
32	5075.00	Motor 110v
33	5500.00	Micro switch
34	2810.34	Screw
50	5200.10	Hopper Lid
51	5280.10	Hopper
52	5085.00	Side Housing
53	5084.00	Top Housing
54	GM-AR	Adjustment ring Maestro
54	GMP-AR	Adjustment ring Maestro Plus
55	5088.00	Grinding assembly
56	5091.00	Grounds Bin
57	5089.00	Base insert
58	5090.01	Timer knob
59	5092.00	Power cord stopper
60	GM-Feet	Maestro Feet
60	GMP-Feet	Maestro Plus Feet
61	2810.46	Gasket
62	2810.47	PT screw
63	2810.48	PT. screw
64	2810.49	Capacitor
65	2810.50	Terminal
66	5093.00	Power cord
67	3180.38	Wires
68	3180.39	Wires
69	MI3-60	Timer
NS	5070	Hopper Felt Gasket

Maestro / Maestro PLUS®

Parts Schematic

